



A YEAR OF CHANGE



F. SCOTT MCCOWN



LEGACY KEYNOTE SPEAKER MARTIN O'MALLEY, GOV. OF MARYLAND, AND 2012 TEXAS LEGACY BEN BARNES

Twenty-twelve was a year of change. Last April we moved into our new office on North Lamar, and that was only the beginning. Customized to fit our needs, this professional space provided us room to expand our work.

In December, we partnered with PBS and Alpheus Media to release *A Fighting Chance*, a documentary exposing the harsh reality of poverty in Texas and what it really takes for families to survive and thrive in our state. The film aired across the nation and continues to provide new opportunities for community outreach.

We opened our new offices in time to welcome new staff. Our new development director, Deirdre Anderson, CFRE, came to us from Planned Parenthood; Rachel Cooper joined us from the Food Research and Action Center in Washington, D.C., to head our food and nutrition work; our communications team welcomed the talents of Alexa Garcia-Ditta of the Texas Tribune and Mia Ibarra of the Udall Foundation; and Katharine Ligon came on board as the center's first mental health policy analyst.



DEIRDRE ANDERSON



RACHEL COOPER



ALEXA GARCIA-DITTA



MIA IBARRA



KATHARINE LIGON



CPPP'S NEW OFFICES. VIEW [MORE PHOTOS](#).

STAFF

F. Scott McCown
EXECUTIVE DIRECTOR

Anne Dunkelberg
ASSOCIATE DIRECTOR

Cheasty Anderson
TEXAS WELL AND HEALTHY COORDINATOR
AND EDUCATOR

Deirdre Anderson, CFRE
DEVELOPMENT DIRECTOR

Don Baylor, Jr.
SENIOR POLICY ANALYST

Gina Chavez
COMMUNICATIONS ASSOCIATE

Rachel Cooper
SENIOR POLICY ANALYST

Valerie L. Davidson
MANAGER OF FINANCE AND ADMINISTRATION

Eva DeLuna Castro
SENIOR BUDGET ANALYST

Frances Deviney, Ph.D.
TEXAS KIDS COUNT DIRECTOR

Alexa Garcia-Ditta
COMMUNICATIONS ASSOCIATE

Leslie Helmcamp
POLICY ANALYST

Mia Ibarra
OUTREACH ASSOCIATE

Dick Lavine
SENIOR FISCAL ANALYST

Jonathan Lewis
POLICY ANALYST

Katharine Ligon
POLICY ANALYST

Stacey Pogue
SENIOR POLICY ANALYST

Laura Rosen
OPPORTUNITY TEXAS COORDINATOR

Brian Stephens
COMMUNICATIONS DIRECTOR

Chandra Kring Villanueva
POLICY ANALYST

We are proud that Celia Cole, our former nutrition policy analyst, is now the CEO of the Texas Food Bank Network; Jane Burstain, our former child welfare policy analyst, is a senior policy analyst at the Texas Department of Family and Protective Services; and our former development director Janet Hutchison, CFRM, is now a Major Gifts Officer at the American Red Cross.

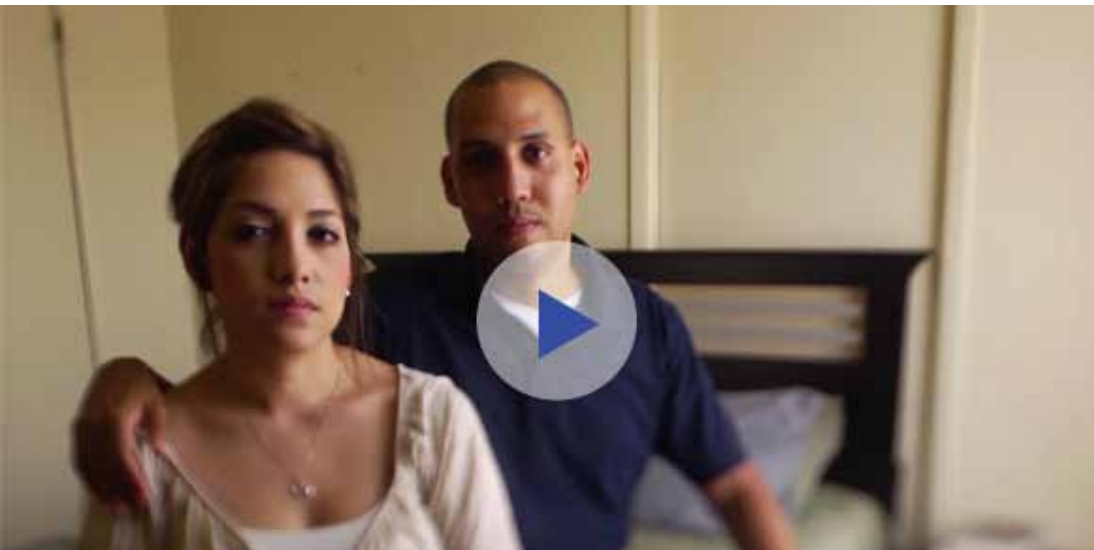
At our annual Legacy Luncheon, we honored Ben Barnes with a keynote by Governor O'Malley of Maryland who emphasized the importance of the public sector in his keynote address.

PUBLICATIONS

In 2012, we released more than 75 reports and comments about public policy, including:

CLICK A TITLE BELOW TO VIEW ONLINE

- [Texas Jobs Snapshots for 2012](#)
- [Who Pays Texas Taxes](#)
- [Choices and Challenges: How Texas County Uninsured Rates Will Drop Under Health Care Reform](#)
- [The Cost of College: How Texas Students and Families are Financing College Education](#)
- [Are Subsidized Guardianships Making a Positive Difference for Kids? Early Evidence from the Field](#)
- [Essential Health Benefits in Texas](#)
- [Texans Support Protections for Payday and Auto Loan Borrowers](#)
- [Choices: The Texas We Create | 2012 State of Texas Children Data Book](#)
- [Access to Healthy and Affordable Food is Critical to Good Nutrition](#)
- [Examining the Alternatives for the Women's Health Program](#)
- [What Happened and What Work Remains? Texas Health Care and the 2011 Legislature](#)
- [Child Protective Services in Texas: Buying What We Want](#)
- [Congress Should Continue Emergency UI, Forget Phony Reforms](#)



ALEXIS & RICHARD JAMES OF SAN ANTONIO ARE ONE OF FIVE FAMILIES CHRONICLED IN OUR DOCUMENTARY, A FIGHTING CHANCE. VIEW THE [TRAILER](#) OR THE [FULL-LENGTH FILM](#).



ENHANCED COMMUNICATIONS

Last October, we launched the new [CPPP.org](#), featuring a Data Center, more graphics and multimedia, a Share Your Story form where you can tell us how you work for a better Texas, and links to our campaigns and projects. The new site also integrates our social media and features the new [BETTER TEXAS Blog](#) where our staff spark conversation and inform the debate on issues important to Texas families.



WELCOME TO OUR NEW

CPPP.ORG

AND INTRODUCING THE

BETTER TEXAS BLOG

“where our works start the conversation and inform the debate”

With these online tools, we'll be able to share more information with you and keep you updated on our work for a better Texas.



THE COST OF COLLEGE
HOW TEXAS STUDENTS AND FAMILIES
ARE FINANCING COLLEGE EDUCATION

CPPP LAUNCHES NEW WEBSITE AND BLOG

2012 TEXAS KIDS COUNT DATA BOOK
CHOICES: THE TEXAS WE CREATE

BOARD

Flora Brewer, Chair
FORT WORTH

Jim Hine, Secretary
AUSTIN

Linda Aaker
AUSTIN

John Castle, Jr.
DALLAS

David Chappell
FORT WORTH

Joe Cunningham, MD, FACP, MBA
AUSTIN

John Hildreth
AUSTIN

William P. Hobby
HOUSTON

Ron Lewis
HOUSTON

Elena Marks
HOUSTON

Dazzie McKelvy
AUSTIN

Steve Murdock, Ph.D.
HOUSTON

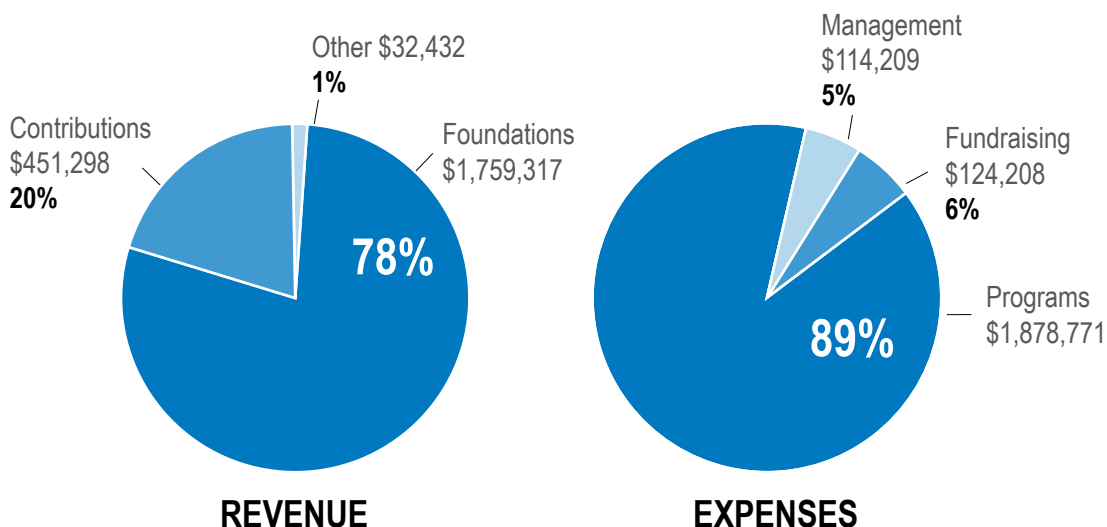
Cynthia Osborne, Ph.D.
AUSTIN

Linda Owen
DALLAS

Blaine Wesner
AUSTIN



FINANCIAL STATEMENT AS OF 10/31/2011



ABOUT

The center is a nonpartisan, nonprofit policy institute committed to improving public policies to make a better Texas. We pursue our mission through independent research, policy analysis and development, public education, advocacy, coalition-building, and technical assistance. We ground our work in rigorous data analysis.

VISION

We envision a prosperous Texas where economic and social opportunity is available in fair measure to all.

HISTORY

Over 25 years ago, the Congregation of Benedictine Sisters in Boerne, Texas, motivated by a vision of social justice for the poor and disenfranchised, opened the center to improve access to health care for the poor. The center evolved into an independent 501(c)(3) policy institute working to address the challenges facing low- and moderate-income Texans.

AFFILIATIONS



A Project of
The Annie E. Casey
Foundation



7020 EASY WIND DR
SUITE 200
AUSTIN, TX 78752

T 512.320.0222
F 512.320.0227

Join the conversation



CPPP.org