

Texas Taxes

WHAT YOU NEED TO KNOW

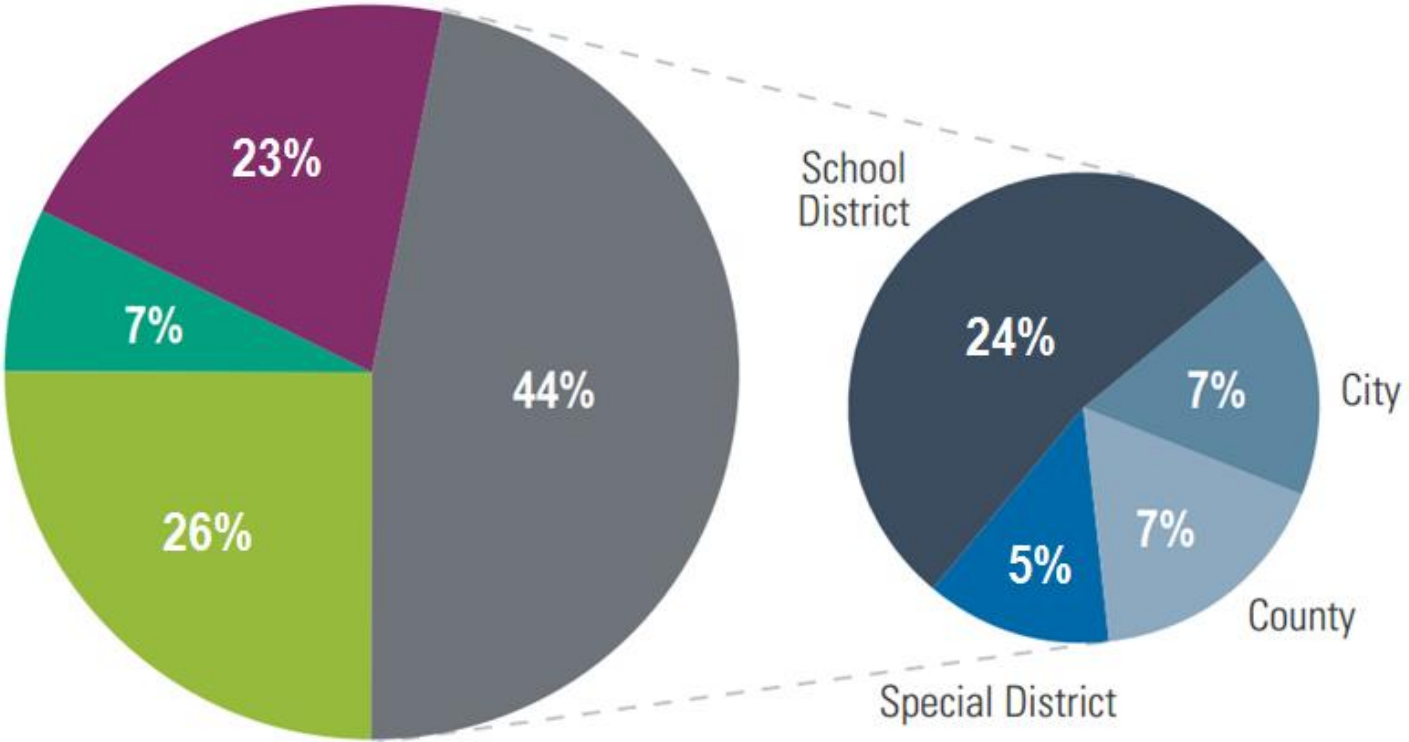
Dick Lavine

Center for Public Policy Priorities

lavine@cPPP.org

[@dlavine](#)

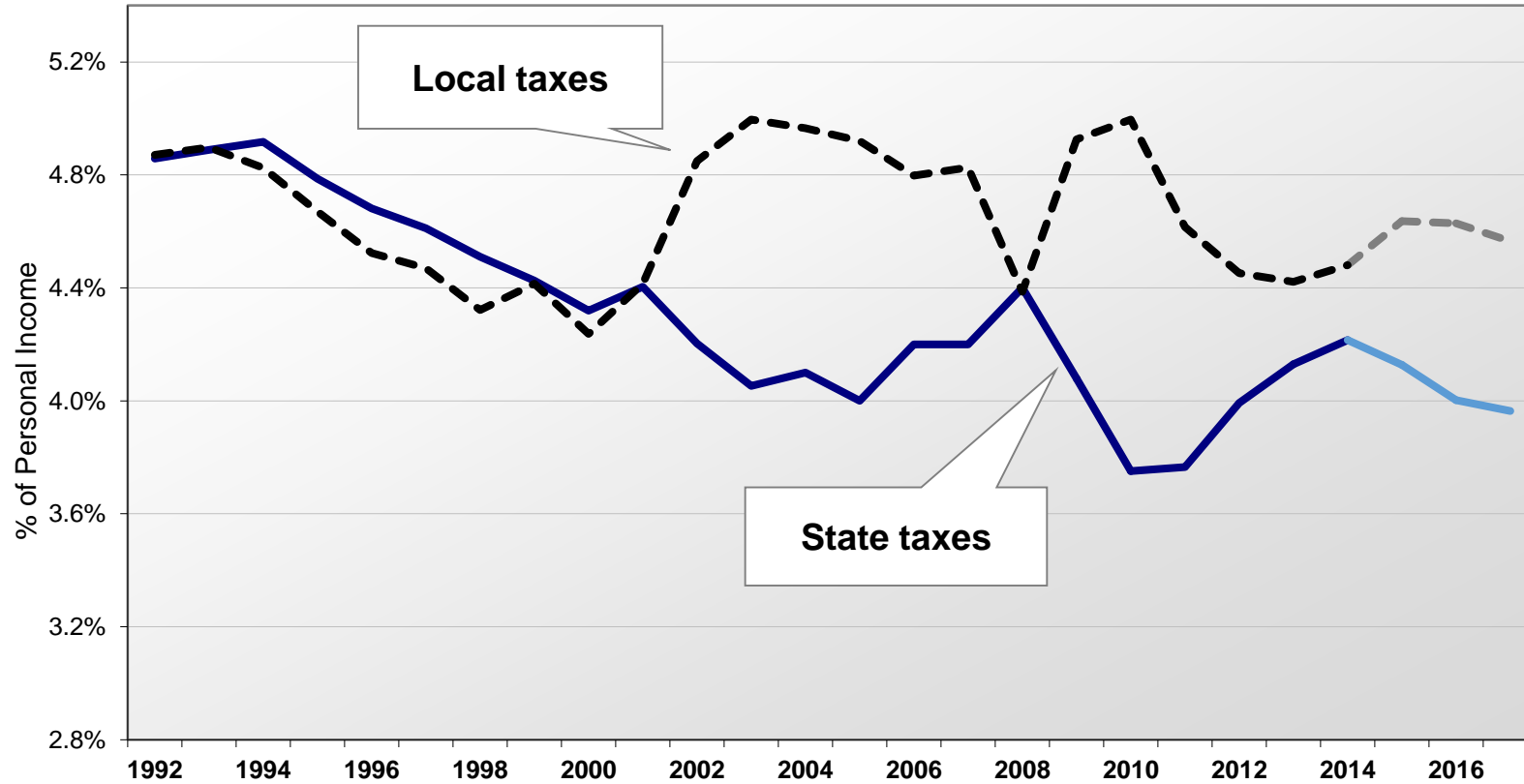
Texas Is a Two-Tax State: Property and Sales Taxes



- Local Sales Tax
- State Sales Tax
- Property Taxes
- Other State Taxes

Sources: Texas Comptroller of Public Accounts, 2014 Annual Cash Report and Biennial Property Tax Report, Tax Years 2012 and 2013.

Services not paid for at state level often become local responsibilities



Sources: Comptroller of Public Accounts, U.S. Census Bureau.
Amounts after fiscal 2014 are forecasts.

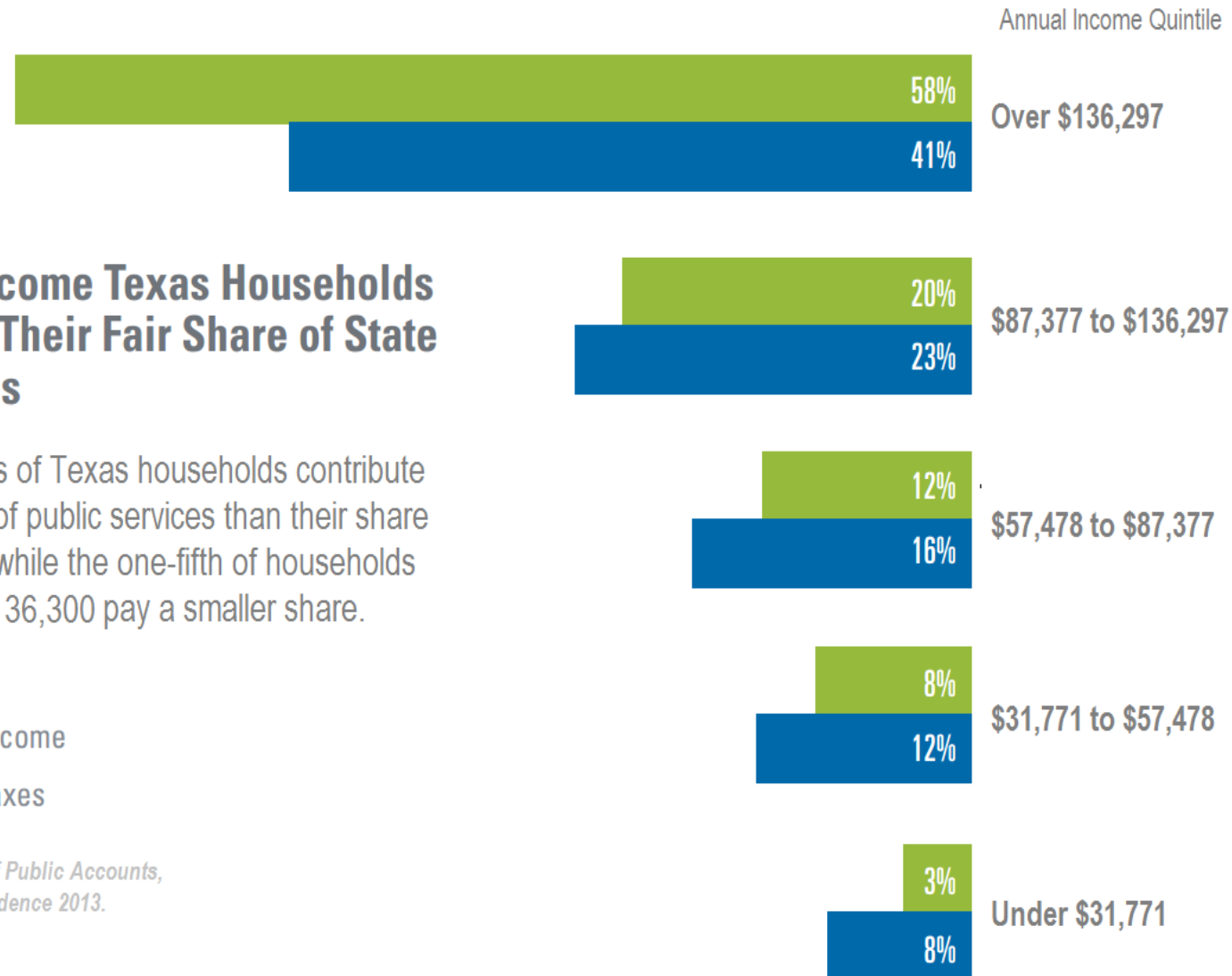
TEXAS' REGRESSIVE TAX SYSTEM

The Highest-Income Texas Households Pay Less Than Their Fair Share of State and Local Taxes

The bottom four-fifths of Texas households contribute more to the support of public services than their share of personal income, while the one-fifth of households with incomes over \$136,300 pay a smaller share.

- Percent of Total Income
- Percent of Total Taxes

Source: Texas Comptroller of Public Accounts, *Tax Exemptions and Tax Incidence 2013*.

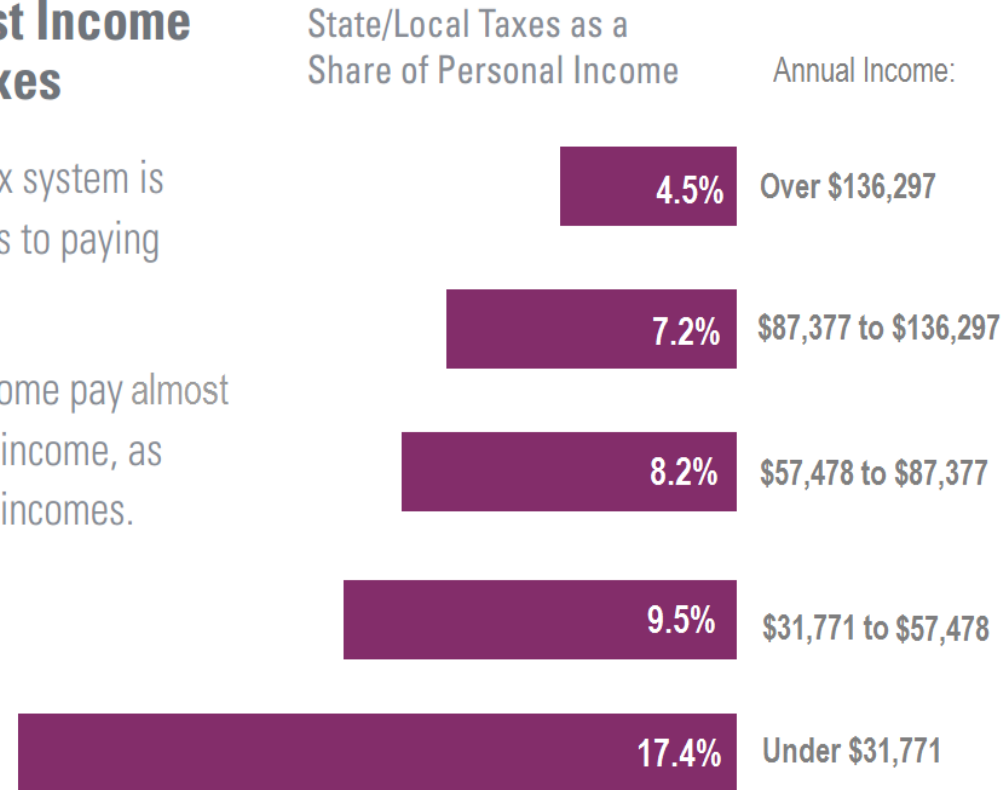


Texas Households with the Lowest Income Pay the Highest Percentage in Taxes

Another way to look at the fairness of Texas' tax system is to examine the share of family income that goes to paying for public services.

The one-fifth of households with the lowest income pay almost four times as much in taxes, as a share of their income, as do the one-fifth of households with the highest incomes.

Source: Texas Comptroller of Public Accounts, *Tax Exemptions and Tax Incidence 2013*.



We believe in a Texas

that offers everyone the chance
to compete and succeed in life.

We envision a Texas

where everyone is healthy, well-educated,
and financially secure.

Center for Public Policy Priorities

@CPPP_TX